

WILLIAMS GATEWAY FEDERAL CONTRACT TOWER, REGIONAL  
AIRLINE ACADEMY, MESA PILOT DEVELOPMENT, UND  
AEROSPACE FTC, AND AIRLINE TRANSPORT PROFESSIONALS

LETTER OF AGREEMENT

EFFECTIVE: 16 January 2007

**SUBJECT:** VFR Arrival and Departure Procedures

**1. PURPOSE:** This letter of Agreement (LOA) establishes the use of VFR arrival and departure procedures to and from Williams Gateway Airport to expedite the safe and efficient flow of VFR aircraft.

**2. DISTRIBUTION:** This LOA is distributed to Williams Gateway FCT, Regional Airline Academy, Mesa Pilot Development, UND Aerospace FTC, and Airline Transport Professionals, FAA, and SERCO Management Services Inc.,

**3. CANCELLATIONS:** None.

**4. SCOPE:** This Letter of Agreement establishes specific procedures for the arrivals and departures to and from Williams Gateway Airport. Responsibilities contained in this agreement apply during periods when the Tower is in operation and in VFR flight conditions.

**5. RESPONSIBILITIES:**

a. The Air Traffic Manager, Regional Airline Academy, Mesa Pilot Development, UND Aerospace FTC, and Airline Transport Professionals shall ensure that all operational personnel adhere to the provisions of this LOA.

**6. REFERENCE POINTS:**

a. Apache Junction: Town located 8 NM Northeast of IWA, and depicted on VFR sectional. (Optional reporting point)

b. GAP: The lowest valley of the Santan Mountains located 10 NM south of IWA and depicted on VFR sectional as Santan Mountains with the highest peak of 3104' MSL. Used for departures when 30's are in use and arrivals when 12's are in use.

c. Johnson Ranch: Residential community located approximately 12 NM southeast of IWA. Used for departures when 12's are in use and arrivals when 30's are in use.

d. Bank of America: Building in Mesa on Alma School and Southern, 12 NM west of Williams Gateway Airport. (Optional reporting point)

**7. PROCEDURES:**

a. Departures - Remain at or below 3000' until exiting Class D.

1. Runway 12 - All Southeast thru Southwest departures, proceed towards Johnson Ranch then on course. Ensure your departure heading does not interfere with opposite

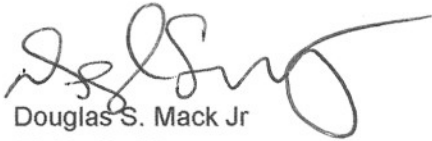
direction inbound traffic to runway 30C. All other directions proceed as instructed by Control Tower.

2. Runway 30 - All Southeast thru Southwest departures, proceed towards the GAP of the Santan Mountains until exiting the Class Delta then proceed on course. All other departures, proceed as instructed by Control Tower.

b. Arrivals - All arrivals enter class delta at traffic pattern altitude.

1. Runway 12 - From the Southeast thru Southwest report over the GAP of the Santan Mountains and proceed inbound as instructed, expect right downwind entry.

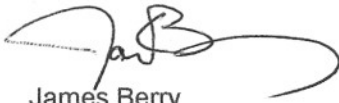
2. Runway 30 - From the Southeast thru Southwest report over the Fry's Grocery in Johnson Ranch as instructed, expect a straight in. For avoidance of Large and Heavy overtake situations be prepared for a westbound turn towards Pegasus followed by a base entry.



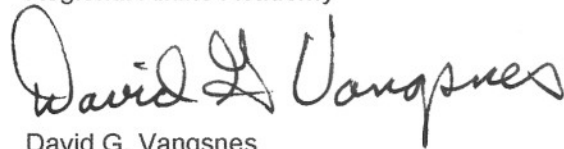
Douglas S. Mack Jr  
Air Traffic Manager  
Williams Gateway FCT



Capt. Ronald Tucker  
Center Director  
Regional Airline Academy



James Berry  
Chief Pilot  
Mesa Pilot Development

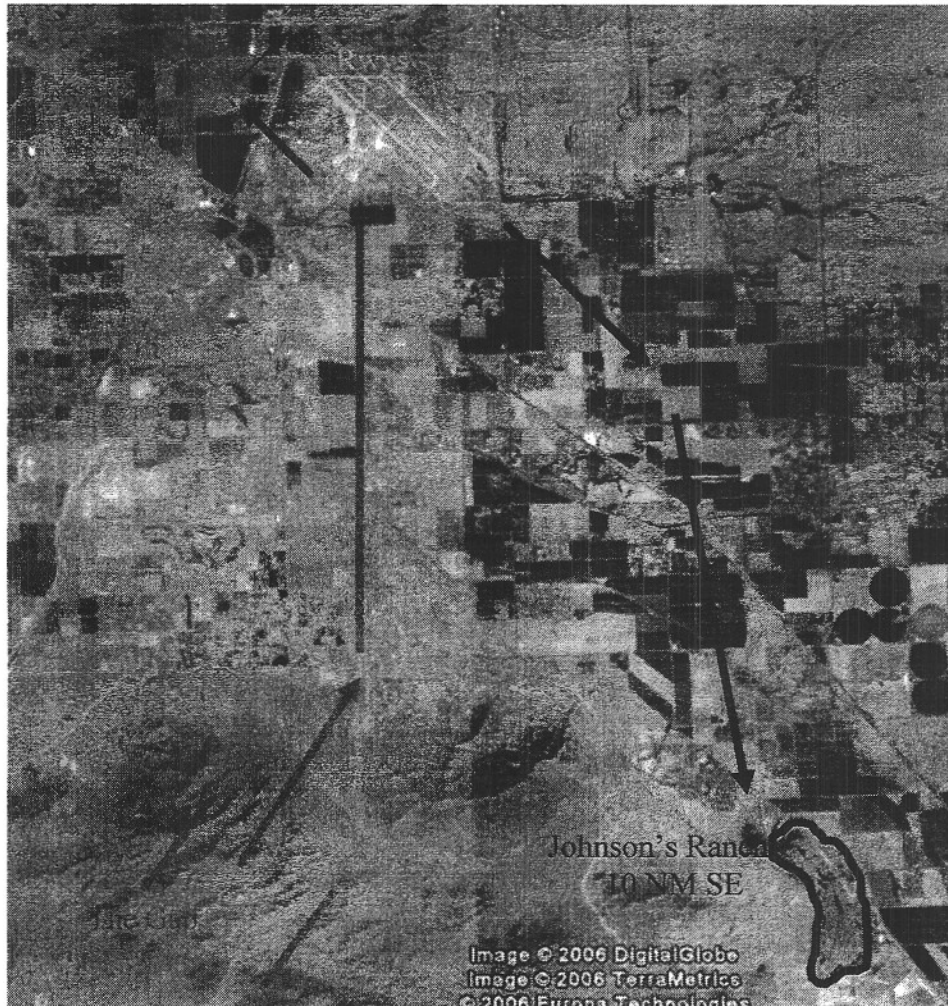


David G. Vangsnes  
Manager  
UND Aerospace FTC



Dave Schiffman  
Chief Pilot  
ATP - PHX

## RUNWAYS 12 IN USE



### JOHNSON'S RANCH DEPARTURE- 10 NM SE of IWA

- On initial call to IWA ground control, for direction of flight, request "Johnson's Ranch Departure".
- Continue runway heading until 300 feet below TPA or passing Ellsworth Rd., then turn right at least 15 degrees towards Johnson Ranch to ensure your departure heading does not interfere with opposite direction inbound traffic to runway 30C.
- Depart IWA class delta airspace at 3,000 MSL
- Once out of IWA class delta airspace, continue climbing on course not to interfere with the GAP inbounds.

### THE GAP ARRIVAL- South of KIWA just east of Santan Peak

- Enter from the south through The Gap and report location to IWA tower as "The Gap"
- Proceed northbound expecting a right downwind entry for Runway 12R or as instructed.
- Enter IWA's Class Delta airspace at TPA.

## RUNWAYS 30 IN USE



### THE GAP DEPARTURE- South of KIWA and just east of Santan Peak

- On initial call to IWA ground control, for direction of flight, request “Gap Departure”
- Turn crosswind when over the Loop 202 FWY or within 300 feet of TPA, whichever occurs first
- Proceed south towards The Gap and exit class delta airspace at 3,000 MSL
- Once out of class delta airspace, continue climbing on course not to interfere with the Johnson Ranch Arrivals.

### JOHNSON’S RANCH ARRIVAL- 10 NM Southeast of IWA

- Enter over Johnson Ranch, once over the Fry’s Grocery report location to IWA tower as “over Johnson Ranch”
- Proceed northbound to a 5NM final and expect straight-in approach for Runway 30L or as instructed by tower.
- Enter IWA’s Class Delta airspace at TPA.
- For avoidance of Large and Heavy overtake situations be prepared for a westbound turn towards Pegasus followed by a base entry, or as instructed by tower.