

WITTMAN, ARIZONA
(LUKE AFB AUX-1)

ILS RWY 11

(NOT FOR USE IN IMC)

LOC I-BRZ 109.7	APCH CRS 107°	RWY LDG THRE FILED ELEV 7802 1552	MISSED APPROACH: Climbing left turn to 3000', hdg 310°, Maintain VFR
ATIS 134.925 269.9	LUKE APP CON 118.15 363.125	LUKE TOWER 19.1 379.9	GROUND CON 133.175 335.8
CLNC DEL 126.25 273.475			

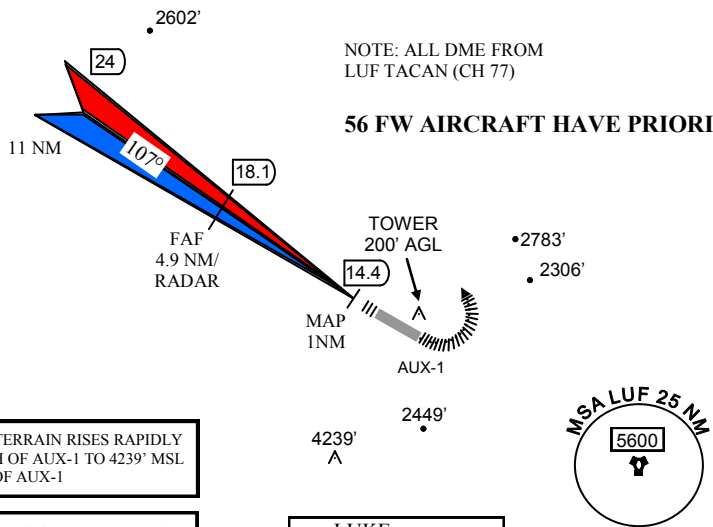
RADAR REQUIRED

FOR USE UNDER BASIC DAY VFR WEATHER
MINIUMS ONLY

PILOTS RESPONSIBLE FOR TERRAIN/
OBSTACLE
AVOIDANCE

NOTE: ALL DME FROM
LUF TACAN (CH 77)

56 FW AIRCRAFT HAVE PRIORITY

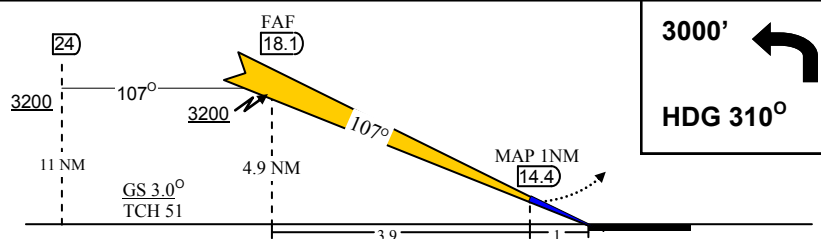


CAUTION: TERRAIN RISES RAPIDLY
4NM SOUTH OF AUX-1 TO 4239' MSL
8 NM SSW OF AUX-1

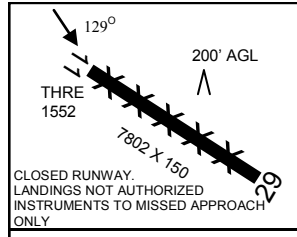
CAUTION: HANG GLIDER TRAFFIC IN
THE VICINITY OF AUX-1

LUKE
CHAN 77 LUF

EMERGENCY SAFE ALT 100NM: 16,200 MSL



CATEGORY	A	B	C	D	E	
S-ILS-11	1,852	300			(VMC)	
S-LOC-11	2,080	528			(VMC)	
USE LUKE AFB WEATHER AND ALTIMETER SETTING						
CIRCLING NOT AUTHORIZED	Knots	90	120	150	180	200
	Min:Sec	3:15	2:26	1:57	1:37	1:28



NOTE: Aircraft experiencing lost comm with RAPCON south of the LUF R-300 should maintain VFR and proceed visually to the AUX-1 field. While enroute re-attempt radio contact.

N33 43.169 W112 32.348 (1552')

ORIG 20121205