

LOC I-BRZ 109.7	APCH CRS 107°	RWY LDG THRE FILED ELEV 7802 1552	MISSED APPROACH: Climbing left turn to 3000', hdg 310°, Maintain VFR
ATIS 134.925 269.9	LUKE APP CON 118.15 363.125	LUKE TOWER 119.1 379.9	GROUND CON 133.175 335.8
			CLNC DEL 126.25 273.475

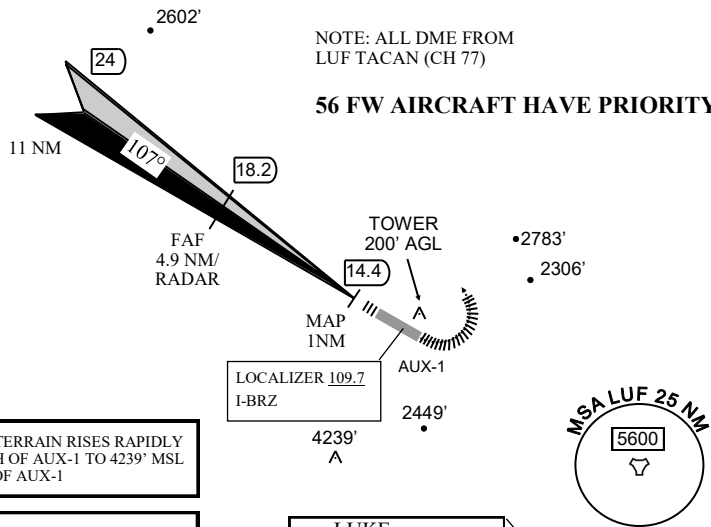
FOR USE UNDER BASIC DAY VFR WEATHER MINIMUMS ONLY **AUX ARR 306.95**

RADAR REQUIRED

PILOTS RESPONSIBLE FOR TERRAIN/OBSTACLE AVOIDANCE

NOTE: ALL DME FROM LUF TACAN (CH 77)

56 FW AIRCRAFT HAVE PRIORITY

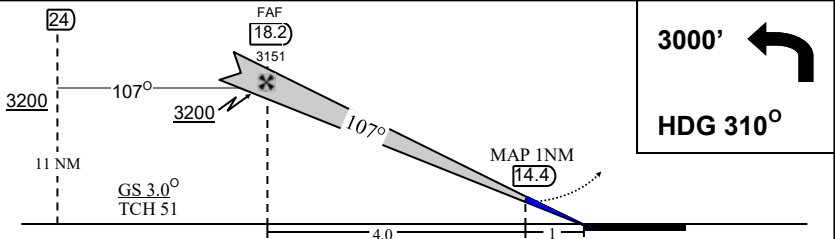


CAUTION: TERRAIN RISES RAPIDLY 4NM SOUTH OF AUX-1 TO 4239' MSL 8 NM SSW OF AUX-1

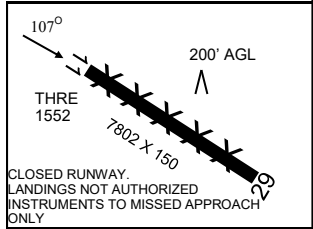
CAUTION: HANG GLIDER TRAFFIC IN THE VICINITY OF AUX-1

LUKE CHAN 77 LUF

EMERGENCY SAFE ALT 100NM: 17,200 MSL



CATEGORY	A	B	C	D	E	
S-ILS-11	1,852	300			(VMC)	
S-LOC-11	2,080	528			(VMC)	
USE LUKE AFB WEATHER AND ALTIMETER SETTING						
CIRCLING NOT AUTHORIZED	Knots	90	120	150	180	200
	Min:Sec	3:15	2:26	1:57	1:37	1:28



N33 43.169 W112 32.348 (1552')

NOTE: Aircraft experiencing lost comm with RAPCON south of the LUF R-300 should maintain VFR and proceed visually to the AUX-1 field. While enroute re-attempt radio contact.

ORIG 20121205

LOC I-BRZ 109.7	APCH CRS 107°	RWY LDG THRE FILED ELEV 7802 1552	MISSED APPROACH: Climbing left turn to 3000', hdg 310°, Maintain VFR
ATIS 134.925 269.9	LUKE APP CON 118.15 363.125	LUKE TOWER 119.1 379.9	GROUND CON 133.175 335.8
			CLNC DEL 126.25 273.475

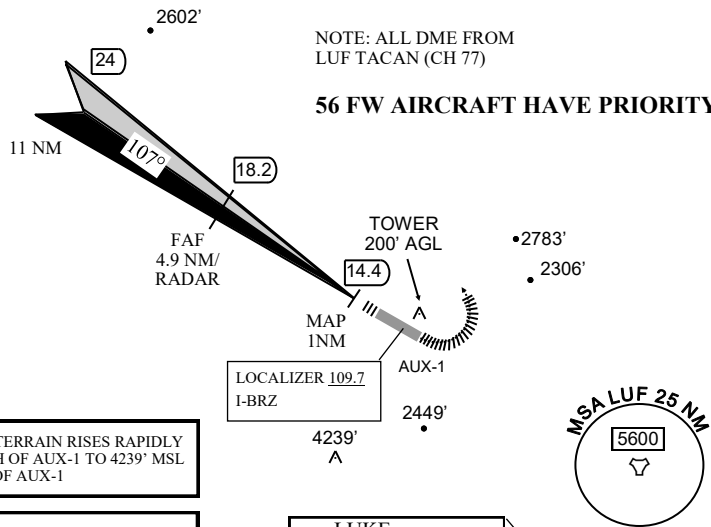
FOR USE UNDER BASIC DAY VFR WEATHER MINIMUMS ONLY **AUX ARR 306.95**

RADAR REQUIRED

PILOTS RESPONSIBLE FOR TERRAIN/OBSTACLE AVOIDANCE

NOTE: ALL DME FROM LUF TACAN (CH 77)

56 FW AIRCRAFT HAVE PRIORITY

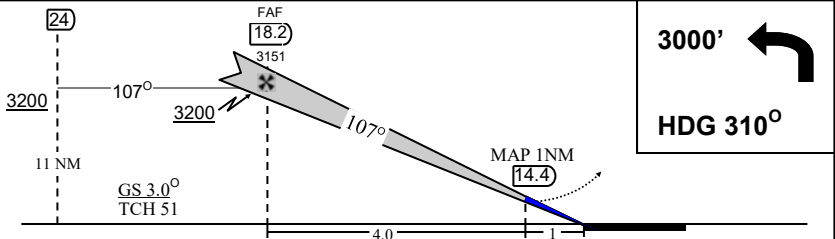


CAUTION: TERRAIN RISES RAPIDLY 4NM SOUTH OF AUX-1 TO 4239' MSL 8 NM SSW OF AUX-1

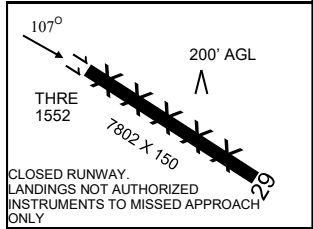
CAUTION: HANG GLIDER TRAFFIC IN THE VICINITY OF AUX-1

LUKE CHAN 77 LUF

EMERGENCY SAFE ALT 100NM: 17,200 MSL



CATEGORY	A	B	C	D	E	
S-ILS-11	1,852	300			(VMC)	
S-LOC-11	2,080	528			(VMC)	
USE LUKE AFB WEATHER AND ALTIMETER SETTING						
CIRCLING NOT AUTHORIZED	Knots	90	120	150	180	200
	Min:Sec	3:15	2:26	1:57	1:37	1:28



N33 43.169 W112 32.348 (1552')

NOTE: Aircraft experiencing lost comm with RAPCON south of the LUF R-300 should maintain VFR and proceed visually to the AUX-1 field. While enroute re-attempt radio contact.

ORIG 20121205