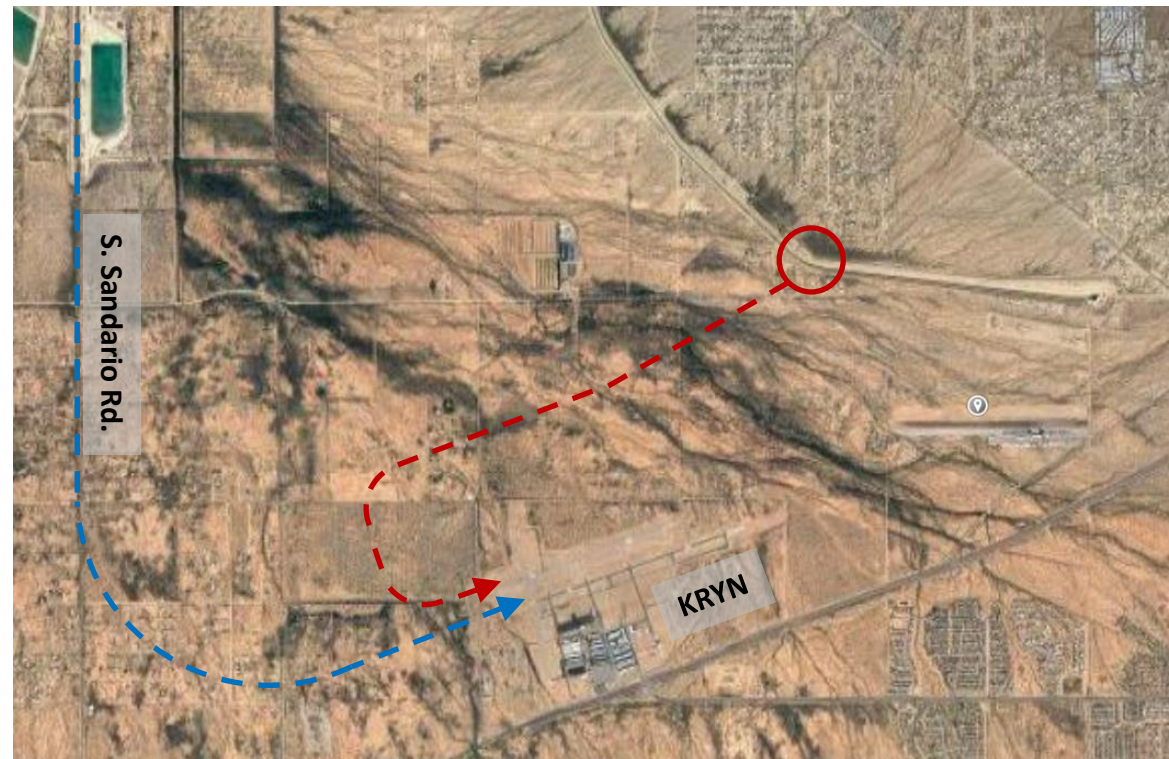


# KRYN—Recommended NW Entries

- Base entry to runway 06 from NW
  - Follow S. Sandario Rd.
  - Most common entry when the control tower is operational
- 45 deg. Entry to runway 06 from NW
  - Fly toward the southwestern bend in the canal
  - Then toward the tower for a left downwind entry to runway 06
  - Preferred entry when the control tower is not operating—non-towered procedures
- Contacting the tower at 10nm inbound is recommended.
- Generally, 06L is used for takeoff and landings (including pattern work and full stop taxi backs), leaving 06R available for instrument approaches. If traffic permits, full stop aircraft may be assigned 06R to reduce taxiing and runway crossings.
- For safe obstacle clearance during visual approaches, use the VASI on 24L and PAPI otherwise.
- Helicopter traffic is typically assigned left traffic for runway 06L. In this case, fixed wing traffic may be assigned runway 06R. Rotorcraft will be at the same pattern altitude as fixed wing aircraft, 3200' MSL.
- Fuel and Restaurant access are via the south end of taxiway B2.
- While traffic may enter and exit the Class D (Class E) airspace of KRYN from any direction, the procedures depicted here will help aircraft conduct a safe flow of traffic for the most common inbound routes.

06L tower frequency and Northern airspace: **120.35**



06R tower frequency and Southern airspace: **125.80**

(may also include ground control for South side taxi depending on traffic load)