

KGYR/GYR

PHOENIX-GOODYEAR MUN

31 JAN 23



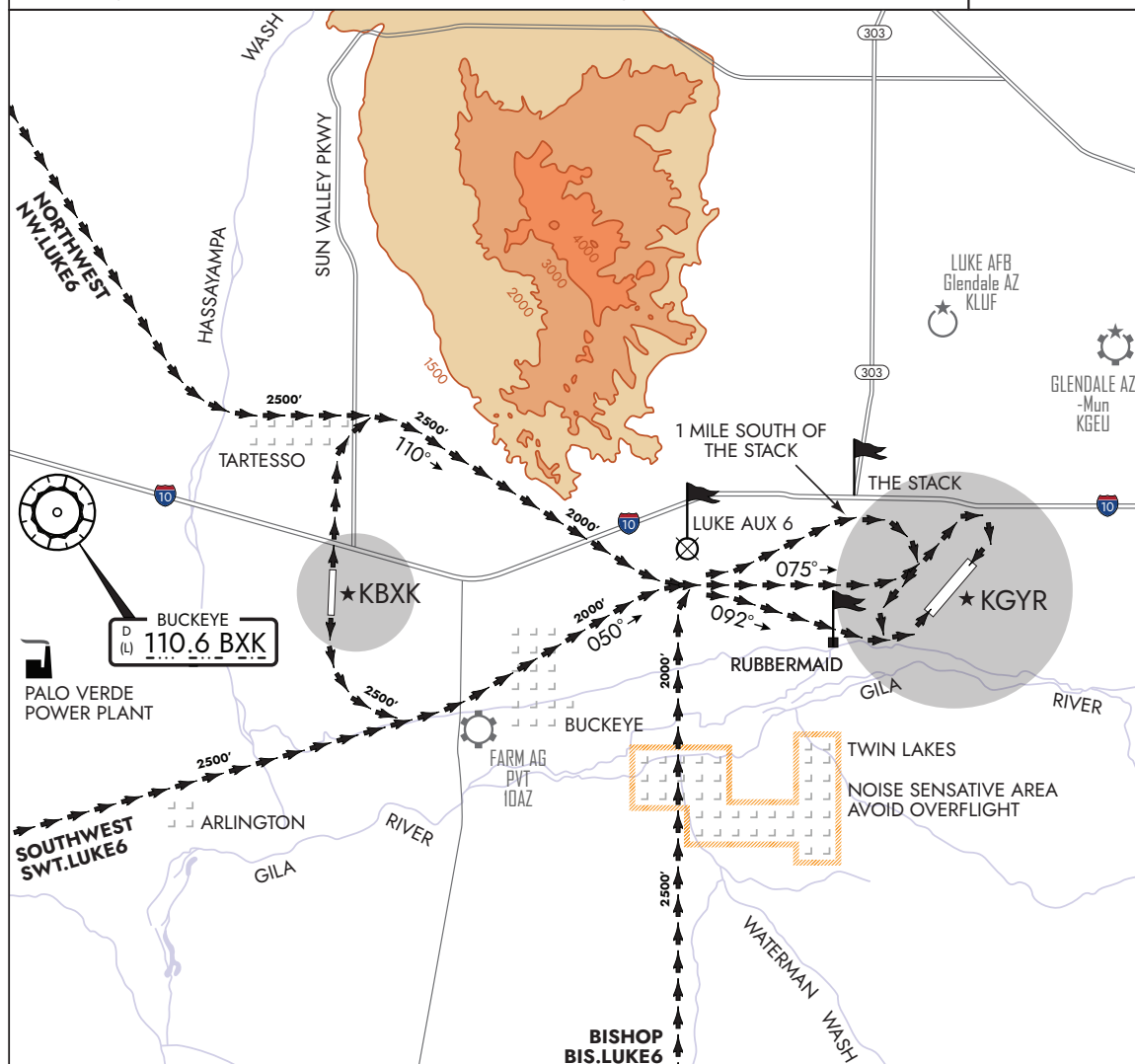
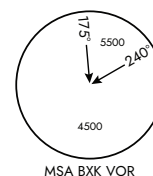
GOODYEAR, ARIZ

LUKE AUX 6 VFR ARRIVAL

RAINBOW VALLEY		BUCKEYE		APPROACH/DEPARTURE		GOODYEAR		
ADVISORY 128.925		AWOS 119.625	CTAF 122.975	*LUKE 125.45	PHOENIX 120.7 when LUKE in op.	*ATIS 118.35	*GROUND 121.7	*TOWER CTAF 120.1

NOTES:

1. All transitions should arrive ~1-2 NM south through west of Luke Aux 6 then pass 1/2 NM south of Luke Aux 6.
2. Initial calls to the KGYR Tower should be made 2 NM prior to Passing abeam Luke Aux 6.
3. In all cases avoid the Palo Verde Nuclear Power Plant by not less than 3 NM.
4. All headings are approximate; wind correction should be applied for desired ground track.

**ROUTING****Bishop Transition**

Fly direct Luke Aux 6 MAINTAIN 2500' MSL until crossing the Gila River then DESCEND and MAINTAIN 2000' MSL direct 1/2 nm south of Luke Aux 6, thence...

Buckeye Transition Rwy 17

Fly straight out until reaching 2000' MSL. Turn heading 060 direct to a point 1/2 nm south of Luke Aux 6 & MAINTAIN 2000' MSL, thence...

Buckeye Transition Rwy 35

Fly straight out until 3 nm north of the I-10 (Northern boundary of Tartesso community) climb and MAINTAIN 2500' MSL. From the northside of Tartesso fly heading 110 to ~1 nm southwest of Luke Aux 6 then eastbound to 1/2 nm south of Luke Aux 6. After passing foothills DESCEND and MAINTAIN 2000' MSL. Thence...

Northwest Transition (Solo)

Contact Luke Approach on 125.45 for traffic advisories. DESCEND and MAINTAIN at or below 6000' MSL before proceeding to the gravel pit on the Hassayampa Wash. Fly eastbound along the northern boundary of Tartesso Community and DESCEND and MAINTAIN 2500' MSL. From the Northeast corner of Tartesso fly heading 110 to ~1 nm southwest of Luke Aux 6 then eastbound to 1/2 nm south of Luke Aux 6. After passing foothills DESCEND and MAINTAIN 2000' MSL, Thence...

Southwest Transition

Fly to 1 nm north of Arlington at 2500' MSL. Fly 1 nm south of the Railroad tracks at 2500' MSL to the NW corner of FARM AG Pvt. Continue to a point 1/2 nm south of Luke Aux 6 and DESCEND and MAINTAIN 2000' MSL, thence...

RWY	LANDING
21	Proceed at 2000' MSL as directed by KGYR Tower for right downwind entry Rwy 21 (fly hdg 075)
3	Left Base Fly direct Rubbermaid (~hdg 092) Left Downwind Enter left downwind Rwy 03 (follow the canal direct to 1 nm SW of the I-10/303 stack then enter midfield left downwind at ninety degrees.) Do not cross the I-10.